

**Product data sheet:  
Electric height adjustable desk frame 501-27**



**Table of contents**

Packing details .....3

Main measures and specifications .....4

Tabletop drillings .....5

Assembly and use .....6

Safety and tests .....7

Component specifications.....8

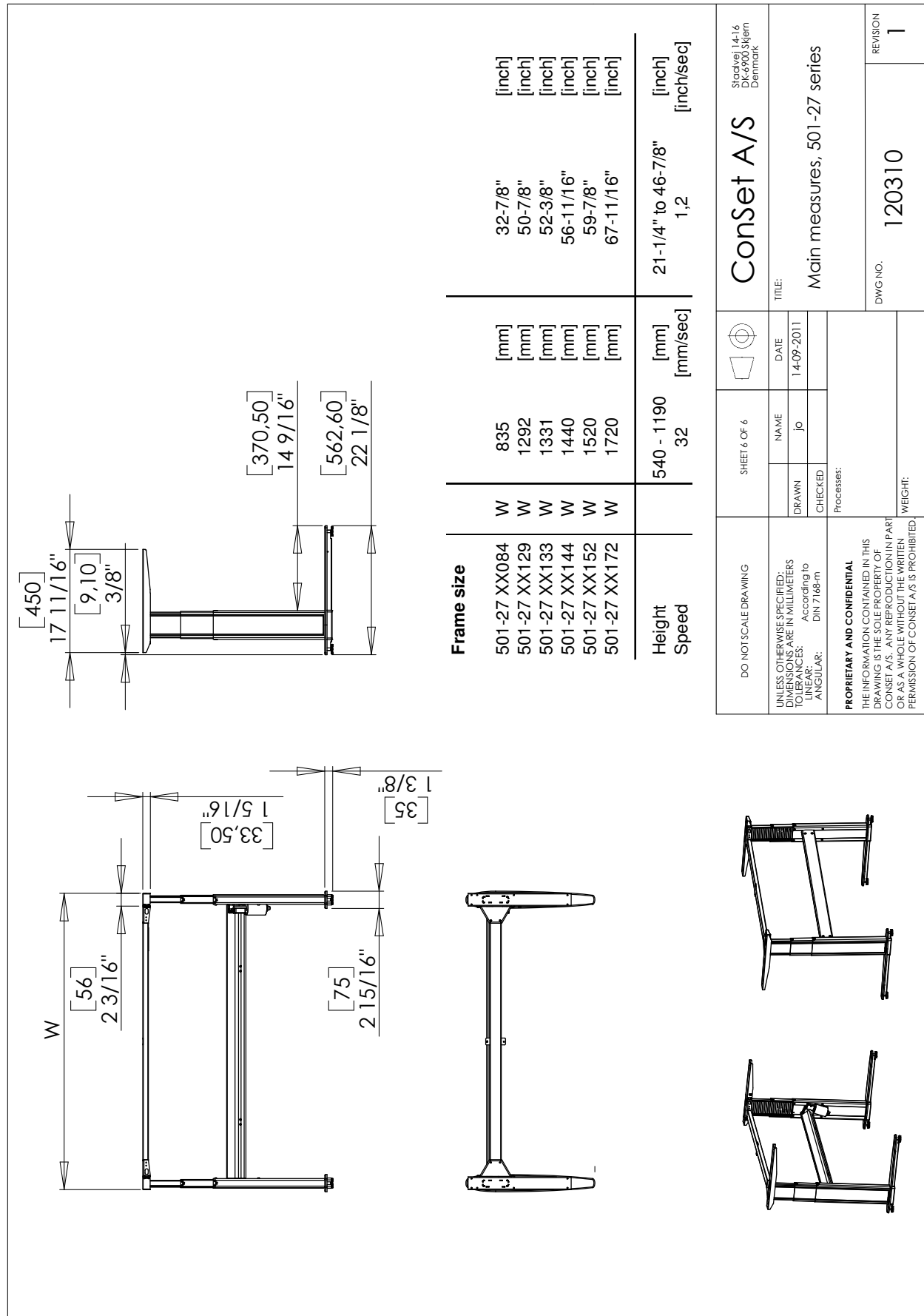
## Packing details

<b>501-27 - box measures</b>					
<b>Box of legs</b>	WxDxH	[mm]	575 x 165 x 565	[mm]	22-5/8" x 6-1/2" x 22-1/4"
<b>Box of cross bars</b>					
501-2X XX084	LxWxH	[mm]	790 x 185 x 100	[mm]	31-1/8" x 7-5/16" x 3-15/16"
501-2X XX129	LxWxH	[mm]	1240 x 185 x 100	[mm]	48-13/16" x 7-5/16" x 3-15/16"
501-2X XX133	LxWxH	[mm]	1280 x 185 x 100	[mm]	50-3/8" x 7-5/16" x 3-15/16"
501-2X XX144	LxWxH	[mm]	1390 x 185 x 100	[mm]	54-3/4" x 7-5/16" x 3-15/16"
501-2X XX152	LxWxH	[mm]	1470 x 185 x 100	[mm]	57-7/8" x 7-5/16" x 3-15/16"
501-2X XX172	LxWxH	[mm]	1670 x 185 x 100	[mm]	65-3/4" x 7-5/16" x 3-15/16"
<b>501-27 - box weights</b>					
<b>Box of legs</b>			20	[kg]	44
<b>Box of cross bars</b>					
501-2X XX084			4	[kg]	9
501-2X XX129			5	[kg]	11
501-2X XX133			6	[kg]	13
501-2X XX144			6,5	[kg]	14
501-2X XX152			7	[kg]	15
501-2X XX172			8	[kg]	17

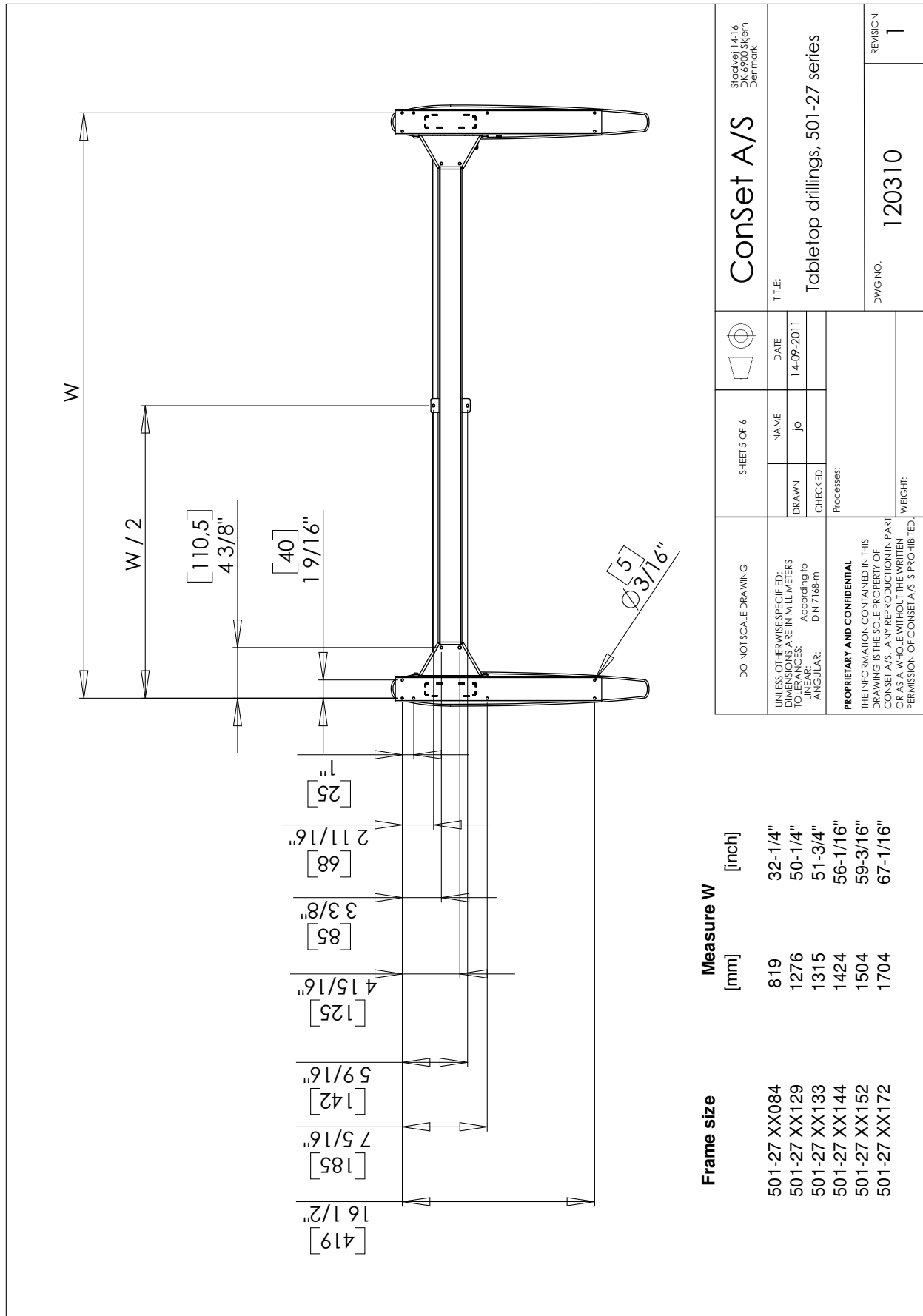
  
  

DO NOT SCALE DRAWING	SHEET 4 OF 4		<b>ConSet A/S</b>		Staalvej 14-16 DK-6900 Skjern Denmark
UNLESS OTHERWISE SPECIFIED: DIMENSIONS ARE IN MILLIMETERS TOLERANCES: LINEAR: According to ANGULAR: DIN 7168-m	DRAWN	NAME	TITLE:		
	CHECKED	jo	Box components, 501-27 Series		
<b>PROPRIETARY AND CONFIDENTIAL</b> THE INFORMATION CONTAINED IN THIS DRAWING IS THE SOLE PROPERTY OF CONSET A/S. ANY REPRODUCTION IN PART OR AS A WHOLE WITHOUT THE WRITTEN PERMISSION OF CONSET A/S IS PROHIBITED.			DWG NO.	125160	REVISION 0
Processes:			WEIGHT:		

## Main measures and specifications



## Tabletop drillings



DO NOT SCALE DRAWING		SHEET 5 OF 6		ConSet A/S Stadshøj 14-16 DK-9000 Skjern Denmark	
UNLESS OTHERWISE SPECIFIED: DIMENSIONS ARE IN MILLIMETERS TOLERANCES: According to LINEAR: DIN 7168-m ANGULAR:		DRAWN: jo	DATE: 14-09-2011	TITLE: Tabletop drillings, 501-27 series	
<p><b>PROPRIETARY AND CONFIDENTIAL</b></p> <p>THE INFORMATION CONTAINED IN THIS DRAWING IS THE SOLE PROPERTY OF CONSET. IT IS TO BE USED ONLY IN PART OR AS A GUIDE WITHOUT THE WRITTEN PERMISSION OF CONSET A/S IS PROHIBITED.</p>		CHECKED:	Processes:	DWG NO. 120310	REVISION 1
		WEIGHT:			

## Assembly and use

Along with all products a "Direction for assembly and use" is delivered. In this you will find a detailed description of the way of assembly.



After the frame has been mounted the chosen tabletop is mounted and the operation unit will be possible to fix at the bottom side of the table top. This operation unit has a push switch and a rocker switch.

With push switch A and rocker switch B it is possible to move the tabletop up and down and can be stopped at all levels. For safety reasons it is necessary to push both buttons at the same time for moving the table up and down.



The desk frame has a safety feature. If the moving parts of the desk frame meet an obstacle in the down-going motion, the desk frame will stop. The pressure given before stopping is equal to the weight of the tabletop and the articles placed on the tabletop.

## Safety and tests

All ConSet sit and stand desk frames meet the necessary requirements within the following relevant categories:

- EN 527-1: Office furniture – Workplaces and desks – Part 1:  
Dimensions
- EN 527-2: Office furniture – Workplaces and desks – Part 2:  
Mechanical safety requirements
- EN 527-3: Office furniture – Workplaces and desks – Part 3:  
Methods of test for the determination of the stability and the mechanical strength of the structure.

### Declaration of conformity

We hereby declare, under our sole responsibility that the following product:

- ConSet sit and stand table product type **501-27**

is in accordance with:

- Directive 2006/42/EF of The European Parliament and of the Council of 17 May 2006 on machinery and on changes of directive 95/16/EF

With reference to the above please be aware that:

- the sit and stand table is considered a machine and
- the sit and stand table may not be used until it has been assembled and installed according to the instructions.

## Component specifications

Metal sheet parts:	St 37-2
Gear parts:	St 70-2
Gear motor:	CS no. 115720
Power supply:	80 W AC Power Transformer Input 100-240 VAC ~ 50/60Hz Consumption: 80 Watts; Standby: Less than 1 Watt
Plastic components:	PA6, POM, PE-HD
Surface treatment:	Visible metal parts powder coated in "alu" colour, RAL9006 and black, RAL9004. Non visible metal parts are surface treated (e.g. plated)