

**Product data sheet:
Electric height adjustable desk frame 501-27**



Table of contents

Packing details3

Main measures and specifications4

Tabletop drillings5

Assembly and use6

Safety and tests7

Component specifications.....8

Packing details

501-27 - box measures					
Box of legs	WxDxH	[mm]		[inch]	
501-27 XXXXX	575 x 165 x 565	[mm]		22-5/8" x 6-1/2" x 22-1/4"	[inch]
Box of cross bars					
501-2X XX084	LxWxH	[mm]		31-1/8" x 7-5/16" x 3-15/16"	[inch]
501-2X XX129	LxWxH	[mm]		48-13/16" x 7-5/16" x 3-15/16"	[inch]
501-2X XX133	LxWxH	[mm]		50-3/8" x 7-5/16" x 3-15/16"	[inch]
501-2X XX144	LxWxH	[mm]		54-3/4" x 7-5/16" x 3-15/16"	[inch]
501-2X XX152	LxWxH	[mm]		57-7/8" x 7-5/16" x 3-15/16"	[inch]
501-2X XX172	LxWxH	[mm]		65-3/4" x 7-5/16" x 3-15/16"	[inch]
501-27 - box weights					
Box of legs		[kg]		[lbs]	
501-27 XXXXX	20	[kg]		44	[lbs]
Box of cross bars					
501-2X XX084	4	[kg]		9	[lbs]
501-2X XX129	5	[kg]		11	[lbs]
501-2X XX133	6	[kg]		13	[lbs]
501-2X XX144	6,5	[kg]		14	[lbs]
501-2X XX152	7	[kg]		15	[lbs]
501-2X XX172	8	[kg]		17	[lbs]

DO NOT SCALE DRAWING	SHEET 4 OF 4	TITLE:	
UNLESS OTHERWISE SPECIFIED: DIMENSIONS ARE IN MILLIMETERS TOLERANCES: LINEAR: According to ANGULAR: DIN 7168-m	DRAWN	NAME	DATE
	CHECKED	jo	03-02-2011
Processes:			
PROPRIETARY AND CONFIDENTIAL THE INFORMATION CONTAINED IN THIS DRAWING IS THE SOLE PROPERTY OF CONSET A/S. ANY REPRODUCTION IN PART OR AS A WHOLE WITHOUT THE WRITTEN PERMISSION OF CONSET A/S IS PROHIBITED.			
WEIGHT:		DWG NO.	REVISION
		125160	0

Main measures and specifications

Technical drawing showing the main measures and specifications for the electric height adjustable desk frame 501-27. The drawing includes a front view, a side view, and a perspective view. Dimensions are provided in millimeters [mm] and inches [inch].

Dimensions:

- Front view: Total height 450 [mm], top section height 17 11/16" [442.5 mm], top section width 9,10 [mm], top section thickness 3/8" [9.5 mm].
- Side view: Total height 370,50 [mm], top section height 14 9/16" [395 mm], bottom section height 562,60 [mm], bottom section thickness 22 1/8" [563.5 mm].
- Other dimensions: 56 [mm], 2 3/16" [50.8 mm], 75 [mm], 2 15/16" [50.5 mm], 35 [mm], 1 3/8" [34.9 mm], 33,50 [mm], 1 5/16" [38.1 mm].

Frame size	W	[mm]	[inch]
501-27 XX084	835	[mm]	32-7/8" [inch]
501-27 XX129	1292	[mm]	50-7/8" [inch]
501-27 XX133	1331	[mm]	52-3/8" [inch]
501-27 XX144	1440	[mm]	56-11/16" [inch]
501-27 XX152	1520	[mm]	59-7/8" [inch]
501-27 XX172	1720	[mm]	67-11/16" [inch]

Height	[mm]	[inch]
540 - 1190	[mm]	21-1/4" to 46-7/8" [inch]

Speed	[mm/sec]	[inch/sec]
32	[mm/sec]	1,2 [inch/sec]

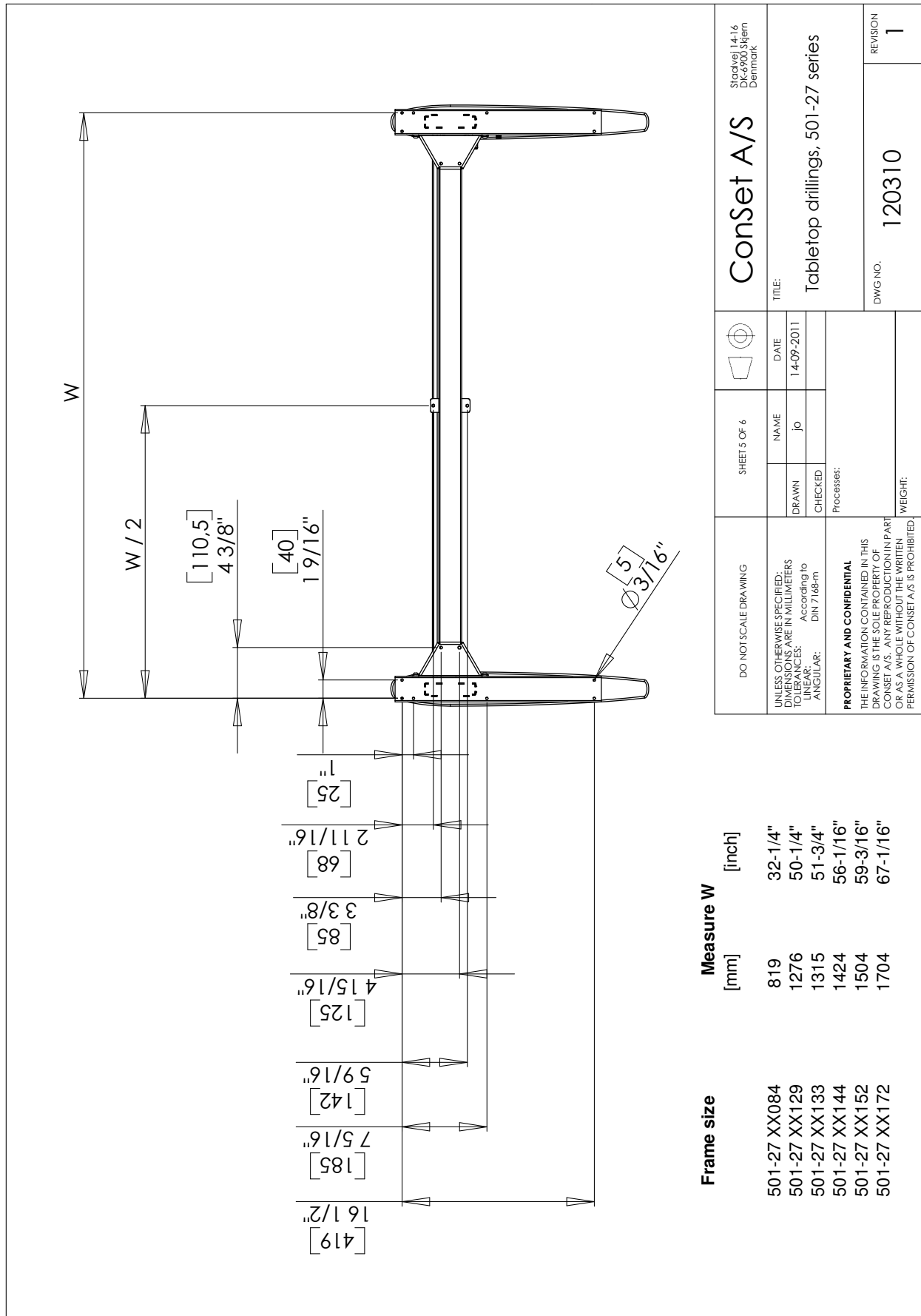
Legend:

- DO NOT SCALE DRAWING
- UNLESS OTHERWISE SPECIFIED: DIMENSIONS ARE IN MILLIMETERS
- TOLERANCES: According to LINEAR: DIN 7168-m ANGULAR:
- PROPRIETARY AND CONFIDENTIAL
- THE INFORMATION CONTAINED IN THIS DRAWING IS THE SOLE PROPERTY OF CONSET. IT IS TO BE USED ONLY IN PART OR AS A WHOLE WITHOUT THE WRITTEN PERMISSION OF CONSET A/S IS PROHIBITED.

Table 1: Product Information

DO NOT SCALE DRAWING	SHEET 6 OF 6	ConSet A/S	Stadshøj 14-16 DK-6900 Skjern Denmark
UNLESS OTHERWISE SPECIFIED: DIMENSIONS ARE IN MILLIMETERS	DRAWN: jo	TITLE: Main measures, 501-27 series	
TOLERANCES: According to LINEAR: DIN 7168-m ANGULAR:	NAME: jo		
PROPRIETARY AND CONFIDENTIAL	DATE: 14-09-2011		
THE INFORMATION CONTAINED IN THIS DRAWING IS THE SOLE PROPERTY OF CONSET. IT IS TO BE USED ONLY IN PART OR AS A WHOLE WITHOUT THE WRITTEN PERMISSION OF CONSET A/S IS PROHIBITED.	CHECKED:		
	Processes:		
	WEIGHT:		
	DWG NO. 120310		REVISION 1

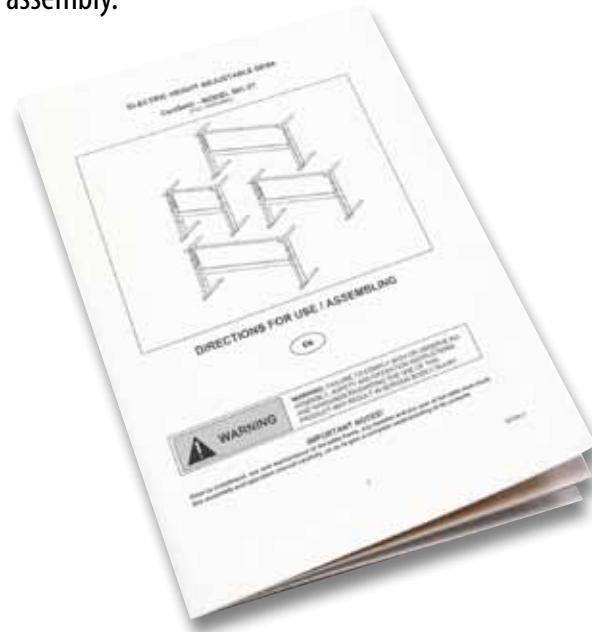
Tabletop drillings



DO NOT SCALE DRAWING	SHEET 5 OF 6	ConSet A/S	Stadshøj 14-16 DK-9000 Skjern Denmark
UNLESS OTHERWISE SPECIFIED: DIMENSIONS ARE IN MILLIMETERS TOLERANCES: According to LINEAR: DIN 7168-m ANGULAR:	DRAWN: jo CHECKED: Processes:	TITLE: Tabletop drillings, 501-27 series	REVISION 1
DATE: 14-09-2011	NAME: jo	DWG NO.: 120310	WEIGHT:
<p>PROPRIETARY AND CONFIDENTIAL THE INFORMATION CONTAINED IN THIS DRAWING IS THE SOLE PROPERTY OF CONSET. IT IS TO BE USED ONLY IN PART OR AS A GUIDE WITHOUT THE WRITTEN PERMISSION OF CONSET A/S IS PROHIBITED.</p>			

Assembly and use

Along with all products a "Direction for assembly and use" is delivered. In this you will find a detailed description of the way of assembly.



After the frame has been mounted the chosen tabletop is mounted and the operation unit will be possible to fix at the bottom side of the table top. This operation unit has a push switch and a rocker switch.

With push switch A and rocker switch B it is possible to move the tabletop up and down and can be stopped at all levels. For safety reasons it is necessary to push both buttons at the same time for moving the table up and down.



The desk frame has a safety feature. If the moving parts of the desk frame meet an obstacle in the down-going motion, the desk frame will stop. The pressure given before stopping is equal to the weight of the tabletop and the articles placed on the tabletop.

Safety and tests

All ConSet sit and stand desk frames meet the necessary requirements within the following relevant categories:

- EN 527-1: Office furniture – Workplaces and desks – Part 1:
Dimensions
- EN 527-2: Office furniture – Workplaces and desks – Part 2:
Mechanical safety requirements
- EN 527-3: Office furniture – Workplaces and desks – Part 3:
Methods of test for the determination of the stability and the mechanical strength of the structure.

Declaration of conformity

We hereby declare, under our sole responsibility that the following product:

- ConSet sit and stand table product type **501-27**

is in accordance with:

- Directive 2006/42/EF of The European Parliament and of the Council of 17 May 2006 on machinery and on changes of directive 95/16/EF

With reference to the above please be aware that:

- the sit and stand table is considered a machine and
- the sit and stand table may not be used until it has been assembled and installed according to the instructions.

Component specifications

Metal sheet parts:	St 37-2
Gear parts:	St 70-2
Gear motor:	CS no. 115720
Power supply:	80 W AC Power Transformer Input 100-240 VAC ~ 50/60Hz Consumption: 80 Watts; Standby: Less than 1 Watt
Plastic components:	PA6, POM, PE-HD
Surface treatment:	Visible metal parts powder coated in "alu" colour, RAL9006 and black, RAL9004. Non visible metal parts are surface treated (e.g. plated)